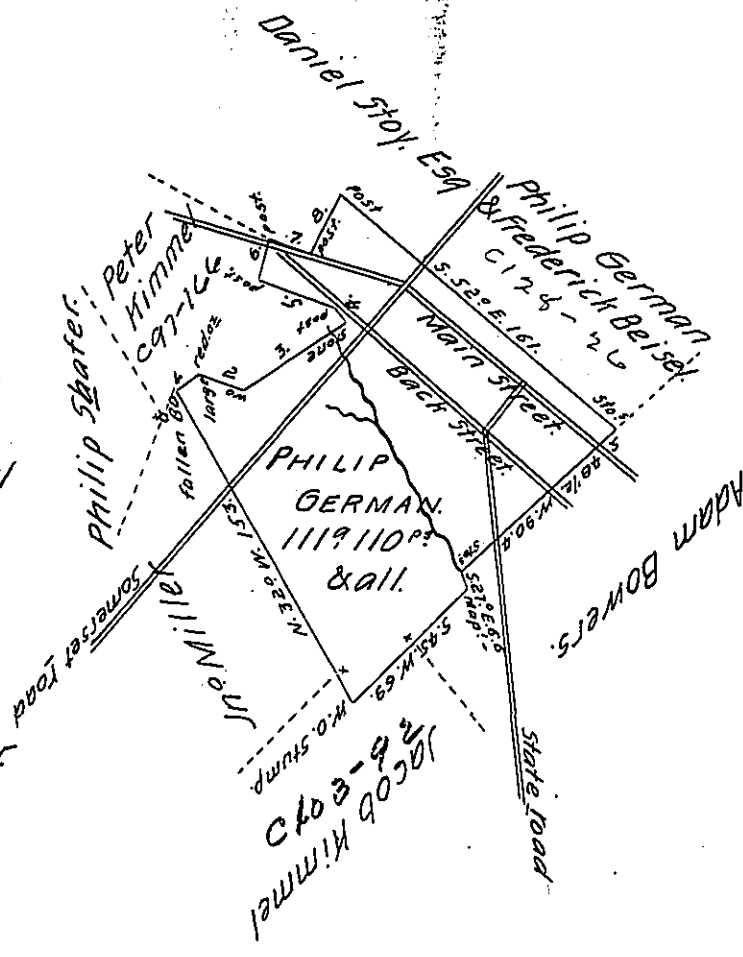


The courses and distances from  
fallen B.O to post.

1.  $50\frac{1}{2}^{\circ}$  E. 12. p<sup>s</sup> large red oz.
2.  $568\frac{1}{2}^{\circ}$  E. 22.5 Wo.
3.  $N54^{\circ}$  E. 54.1 Stone ~~+~~
4.  $N49^{\circ}$  W. 6. post.
5.  $N68^{\circ}$  W. 35. post.
6.  $N11^{\circ}$  E. 16.7 post.
7.  $S70^{\circ}$  E. 20.7 post.
8.  $N20^{\circ}$  E. 26.7 post.

Peter  
Kimmel  
  
Dan!  
Stoy. Esq.



Situate including the Body of Stoy's Town in Quemahoning Township  
late Bedford-  
Somerset County, and surveyed the 2<sup>d</sup> day of July 1802, in pursuance of a  
dated  
Warrant, the 20<sup>th</sup> day of August 1788.

p<sup>s</sup> John M<sup>c</sup>Clean, Deputy.

To Samuel Cochran, Esquire,  
Surveyor General.

IN TESTIMONY that the above is a copy of the original remaining on file in  
the Department of Internal Affairs of Pennsylvania, made  
conformably to an Act of Assembly approved the 16th day of  
February, 1833, I have hereunto set my Hand and caused  
the Seal of said Department to be affixed at Harrisburg,  
this fourteenth day of February 1905.

*George R. Bowers*  
Secretary of Internal Affairs.